

The year in review:
**Houghton Valley Progressive
Association 2022-23**



What we have done, what we are still doing
and what we (and you) would still like to do!

Administration

Revitalising communications



Houghton Valley & Hornsey Rd Community Project

Promoting Membership



Streamlining committee work



Working on a new constitution



Damage to the Hall Roof



Fundraising

Community response

\$15,000

give a little
POWERED BY  perpetual guardian

We may need some more ...



**A new bank
account**

Funding Applications

\$15,000

**Absolutely Positively
Wellington City Council**
Me Heke Ki Pōneke

\$ 5,000

NZCT
NZ COMMUNITY TRUST

Other hall maintenance

Power supply cable



Washing the hall



Kitchen facilities

**But it is not all
about the hall !**

**It is important to engage with and support
community initiatives**



Community garden

Group communication



Kaicycle workshops



Seeds-to-Feeds Festival

Wild Spring Lunch



Harvest Dinner

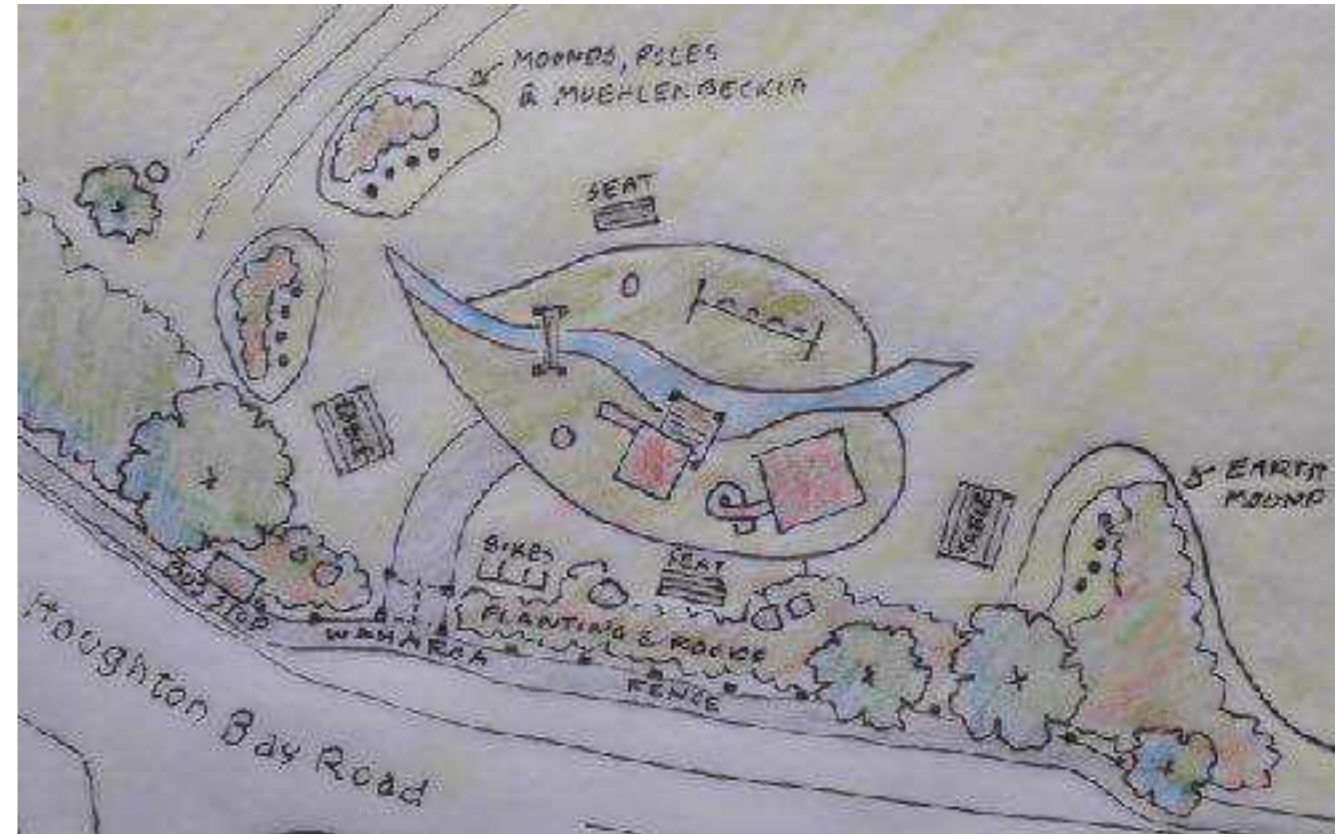


All planned at ...



Playground upgrade

Playground design party



References and suggestions



Te Ohu o Te Raekaihau

Planting



Weeding



Promoting



Collaborating with Ngati toa



History Hikoi

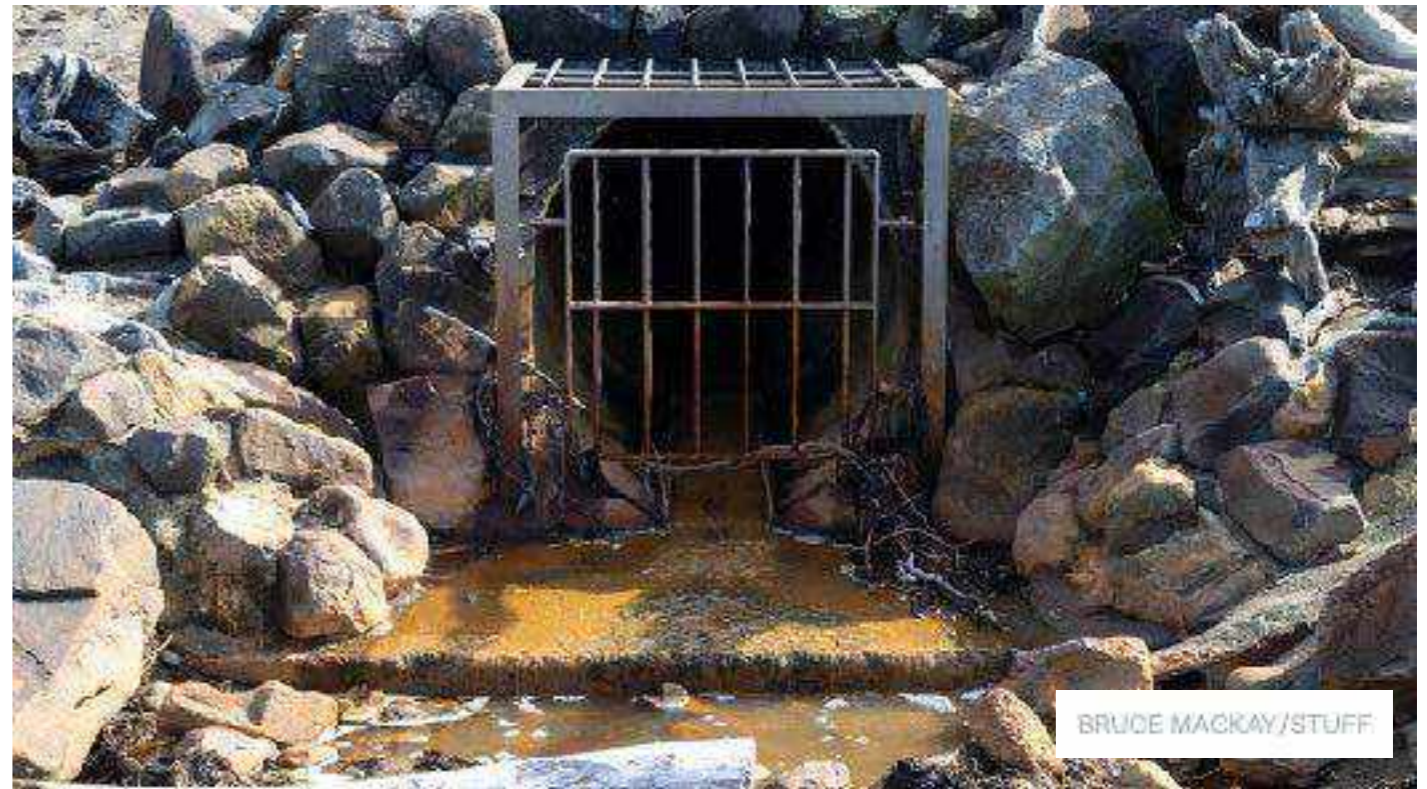
Walking Te Raekaihau and Haewai - a collaboration between the school and the community

School history project - with Maori artist Kate Te Ao, and mana whenua



Leachate and drain odours

The problem continues ...



Houghton Terrace walkway

An important day-to-day and emergency access way

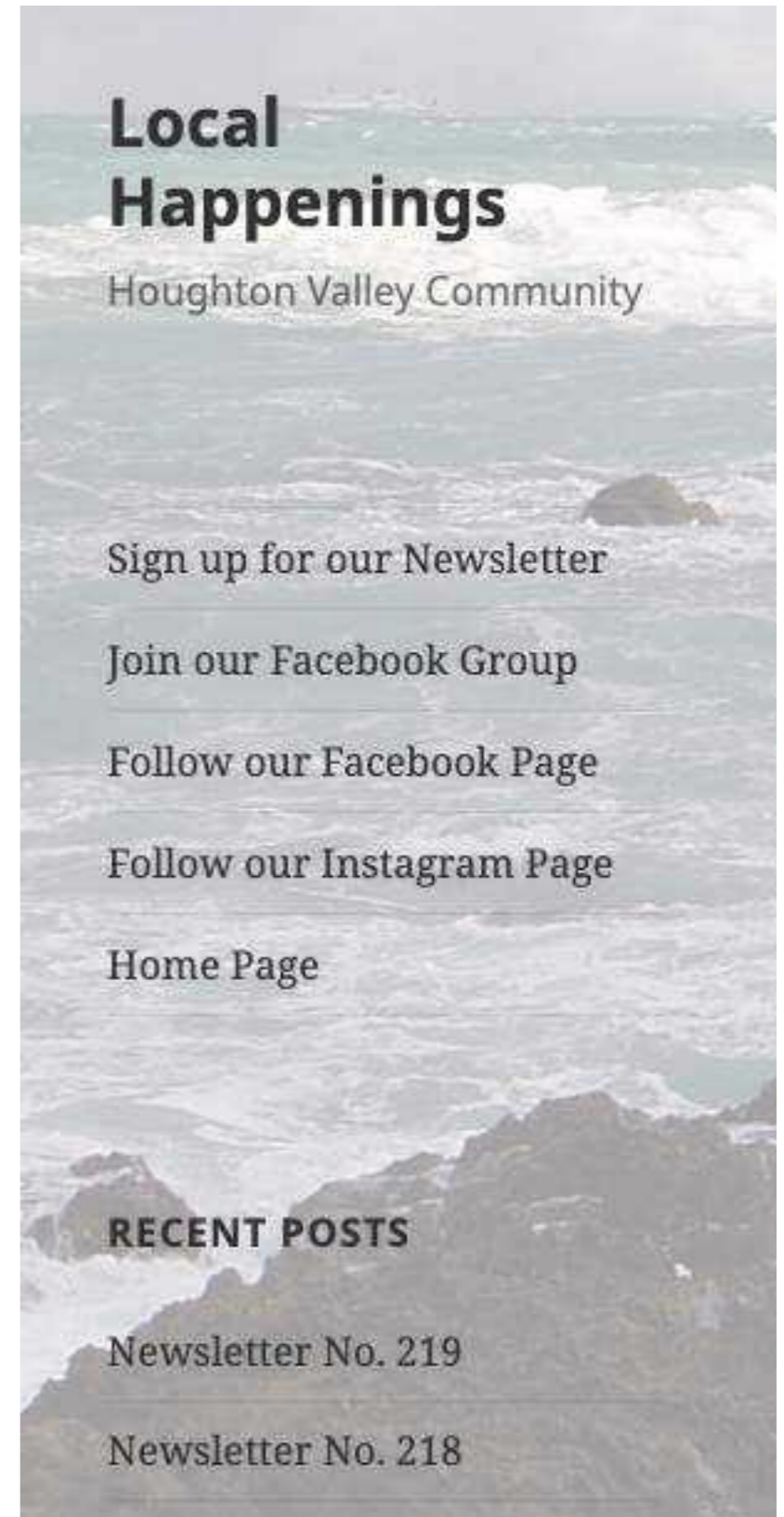


It will be fixed sometime ...



Website and archives

A work in progress to improve and update with activities from the last eight years



Emergency preparedness

Community roles at the hub:

- Supervisor
- Information co-ordination
- Public information
- Needs and offers
- Community space
- Communications
- Facility maintenance



Identifying HV strengths and weaknesses:

- No commercial premises but a range of skills;
- Intrepid and creative people who do things together;
- Gardens and wild foraging;
- Could be cut off, e-bike users important;
- Landfill and hills may be unstable, tsunami to bay area;
- Solar panel systems need to work independently;
- Brian has a digger!

